



SONDHEIM

on



Music and Lyrics by Stephen Sondheim  
Conceived and Directed on Broadway by  
James Lapine

Directed by:  
**Stephen Foreman**  
June 2 – June 18, 2023  
Slayton House Theater  
Wilde Lake Village Center

Inspired by a concept by David Kernan.

Originally produced on Broadway by Roundabout Theatre Company

Todd Haimes, Artistic Director, Harold Walpert, Managing Director, Julia C. Levy, Executive Director

Orchestrations by Michael Starobin

Arrangements by David Loud



@SilhouetteStages



@SilhouetteStage



@silhouettestages

[www.SilhouetteStages.com](http://www.SilhouetteStages.com)

Sondheim on Sondheim Is presented through special arrangement with Music Theatre International (MTI).

All authorized performance materials are also supplied by MTI.

[www.mtishows.com](http://www.mtishows.com)

THE VIDEOTAPING OR MAKING OF ELECTRONIC OR OTHER AUDIO AND/OR VISUAL RECORDINGS OF THIS PRODUCTION IS STRICTLY PROHIBITED.

#### VIDEO CREDITS

Clips from "The Mike Douglas Show" courtesy of CBS Television Distribution; clip from the Bernard Levin Interviews courtesy of the BBC and the Levind Estate; clip from "The David Frost Show" courtesy of CBS Television Distribution and David Frost; clips from "The South Bank Show" are courtesy of ITV Studios Limited; clips showing actors and Stephen Sondheim rehearsing for company and clip showing Ethel Merman and various cast members from Gypsy courtesy of Pennebaker Hegedus Films, Pamela Myers and the Estate of Ethel Merman; clips from "20/20" courtesy of ABC News; clips from "60 minutes" courtesy of CBS News Archive and Diane Sawyer; West Side Story Footage courtesy of MGM, the Estate of Natalie Wood and Richard Beymer. Various photos courtesy of Black Star, Friedman-Abeles Studio, Getty Images, Martha Swope; Peter Cunningham, Rivka Kalvan, Mary Rodgers Guettel and RHO/Imagem. Photograph by Richard Avedon, Stephen Sondheim, composer, New York, June 12, 1961  
© The Richard Avedon Foundation.

#### **Content/ Trigger Warning:**

This production utilizes prop firearms and a gunshot sound effect in the show toward the middle of in Act II during "The Gun Song."



This performance is funded in part by generous grants from:  
The Howard County Arts Council  
The Howard County Government  
The Maryland State Arts Council  
Northrop Grumman  
Rotary Club of Columbia/Patuxent

**Silhouette Stages is an all-volunteer organization. Thank you to our dedicated Board Members for their countless hours of service. Thank you too- to our volunteer team of builders, front of house staff, production team, and actors for the joy you bring to the community!**

Special Thanks to Spotlighters Theatre, Julia Golbey, Richard Atha-Nicholls and to Linda Swann at GAC for all of your support!

Thank you to our partners and donors. Without support from community members like you, this production of Sondheim on Sondheim, our entire season of shows, and our community cabarets would not be possible. Join our team of volunteers and at Silhouette Stages today! [www.silhouettestages.com](http://www.silhouettestages.com)



## A Letter from The Artistic Director

As I write this letter, I'm happy to reflect on the past few years as we have had to adjust with the shift in our world. Early in the pandemic the Board of Directors met via zoom and decided that we are in a position to shift our focus from entertainment to improving our organization to provide safer and higher quality theatre. As a group, we brought our logo and brand up to date and rewrote our By-Laws to better suit our needs and reflect an organization better to serve the community. We have also taken a look at how to better serve our community through diversity and expansion training and keeping an open dialogue with our community.

We were able to bring you *New Ways to Dream*, a virtual Cabaret, and *BKLYN: The Musical* as a virtual production; both 100% safe alternatives to live theatre. We reopened at Slayton House with *Calendar Girls* and Rodgers and Hammerstein's *Cinderella*, adding many safety precautions for our actors and our audiences. We continue those safety precautions and thank you for your compliance as we protect the most vulnerable among us while they cautiously re-enter the world.

Our 18th Season has been filled with high energy, nostalgia, and the lasting impressions stories can have. *The Lightning Thief: The Percy Jackson Musical* brought a high energy, family friendly, musical that set Percy's story to life for those who grew up reading Rick Riordan's books. *The Wedding Singer* crashed into the season with an amazing 80's inspired pop-rock original score and expands upon the original Adam Sandler movie. We now will close our season with *Sondheim on Sondheim*, a docu-musical that allows Stephen Sondheim to explain his creative genius around his musicals and the legacy of musicals he left for us.

Thank you for choosing Silhouette Stages and spending an evening with us. We hope to see you in the future: whether you're watching our shows, volunteering with set build/painting, or even auditioning to be on our stage! You matter to us.

Sincerely,  
TJ Lukacsina

# Sondheim on Sondheim

## ACT I

Overture .....FULL COMPANY

### **INTRODUCTION/ DONUT/ FORUM**

I'll Meet You at the Donut (By George) ..... TOMMY

Invocation/ Forget War (Forum) ..... FULL COMPANY

Love is In the Air (Forum) ..... ANNABELLE, ELLEN, KRISTEN, ROBYN

Comedy Tonight (Forum) ..... FULL COMPANY

### **CHILDHOOD**

Take Me To The World (Evening Primrose) ..... ELLEN

### **EARLY CAREER**

So Many People (Saturday Night) ..... KRISTEN

Something's Coming (West Side Story) .... ANNABELLE, ELLEN, MATT, TOMMY

### **NEUROTICS**

You Could Drive a Person Crazy (Company) ..... JOSH & ROBYN

The Wedding is Off (Company) ..... KRISTEN w/ ELLEN

Now You Know (Merrily We Roll Along) ..... ANNABELLE w/ ELLEN, KRISTEN

### **HAL PRINCE**

Franklin Shepard, Inc. (Merrily We Roll Along) ..... MATT w/ TOMMY, KRISTEN

Good Thing Going (Merrily We Roll Along) ..... KRISTEN

### **THE WRITING PROCESS**

Waiting for the Girls Upstairs (Follies) ..... FULL COMPANY

### **SWEENEY TODD**

Epiphany (Sweeney Todd) ..... JOSH

### **PASSION**

I Read (Passion)..... ROBYN

Is This What You Call Love? (Passion) ..... BENTON

Loving You (Passion) ..... ROBYN

### **RELATIONSHIPS**

Happiness (Passion) ..... FULL COMPANY

### **ACT 1 FINALE**

Ever After (Into The Woods) ..... FULL COMPANY

A Weekend In The Country (A Little Night Music) ..... FULL COMPANY

Sunday (Sunday In The Park With George) ..... FULL COMPANY

*There will be a 15-minute intermission between Act 1 and Act 2.*

# Sondheim on Sondheim

## ACT 2

Entr'acte (Sunday in the Park with George) ..... ORCHESTRA  
God ..... FULL COMPANY

### LOVE SONGS

Losing My Mind/ Not A Day Goes By  
(Follies/ Merrily We Roll Along) ..... ROBYN & KRISTEN

### OPENING DOORS

Opening Doors (Merrily We Roll Along)..... ANNABELLE, ELLEN, MATT, TOMMY  
W/ JOSH, ROBYN

### ROAD SHOW

The Best Thing That Has Ever Happened (Road Show) .... ANNABELLE, BENTON  
TOMMY, JOSH

### COMPANY

Multitudes of Amys (Company) ..... BENTON  
Happily Ever After (Company) ..... JOSH  
Being Alive (Company) ..... TOMMY w/ COMPANY

### POETRY VS. LYRICS

Ah, But Underneath (Follies) ..... KRISTEN w/ BENTON, MATT, TOMMY  
In Buddy's Eyes (Follies) ..... ROBYN

### ASSASSINS

Something Just Broke (Assassins) ..... COMPANY  
The Gun Song\*\* (Assassins) ..... ANNABELLE, JOSH, MATT, TOMMY

### DO I HEAR A WALTZ

Do I Hear A Waltz? (Do I Hear A Waltz?) ..... ELLEN

### GYPSY

Smile, Girls (Gypsy) ..... KRISTEN w/ COMPANY

### SUNDAY IN THE PARK WITH GEORGE

Finishing the Hat (Sunday In The Park with George) ..... JOSH  
Beautiful (Sunday In The Park with George) ..... ROBYN, MATT

### MOTHER, CHILDREN AND TEACHING

Children Will Listen (Into The Woods) ..... FULL COMPANY  
Send in The Clowns (A Little Night Music) ..... ROBYN

### COLLABORATIONS

Company/ Old Friends (Company/ Merrily We Roll Along)..... FULL COMPANY  
Anyone Can Whistle (Anyone Can Whistle) .....,..... FULL COMPANY

#### **\*\* Content/ Trigger Warning:**

*This production utilizes prop firearms and a gunshot in the show toward the middle of in Act II during "The Gun Song."*

# Musical Chronology- Stephen Sondheim

**By George (1946)** performed at the George School

- "I'll Meet you at the Donut"

**Saturday Night (1954)**, unproduced until 1997, book by Julius J. Epstein and Philip G. Epstein.

- "So Many People"

**West Side Story (1957)**, music by Leonard Bernstein, book by Arthur Laurents.

- "Something's Coming"

**Gypsy (1959)**, music by Jule Styne, book by Arthur Laurents.

- "Smile, Girls"

**A Funny Thing Happened on the Way to the Forum (1964)**, book by Burt Shevelove and Larry Gelbart.

- "Invocation/ Forget War"
- "Love is in the Air"
- "Comedy Tonight"

**Anyone Can Whistle (1964)**, book by Arthur Laurents.

- "Anyone can Whistle"

**Do I Hear a Waltz? (1965)**, originally broadcast November 16, 1966; written by John Collier & James Goldman for the television series "ABC Stage 67."

- "Take Me to the World"

**Company (1970)**, book by George Furth.

- "You Could Drive a Person Crazy"
- "The Wedding Is Off"
- "Multitudes of Amys"
- "Happily Ever After"
- "Being Alive"
- "Company"

**Follies (1971)**, book by James Goldman.

- "Ah, But Underneath" (London production, 1987)
- "Waiting for the Girls Upstairs"
- "Losing My Mind"
- "In Buddy's Eyes"

**A Little Night Music (1973)**, book by Hugh Wheeler.

- "Send in the Clowns"
- "A Weekend in the Country"

**Pacific Overtures (1976)**, book by John Weidman, additional material by Hugh Wheeler.

- "Someone in a Tree"

**Sweeney Todd (1979)**, book by Hugh Wheeler.

- "Epiphany"

**Merrily We Roll Along (1981)**, book by George Furth.

- "Now You Know"
- "Franklin Shepard, Inc."
- "Good Thing Going"
- "Opening Doors"
- "Not a Day Goes By"
- "Old Friends"

**Sunday in the Park With George (1984)**, book by James Lapine.

- "Finishing the Hat"
- "Sunday"
- "Beautiful"

**Into the Woods (1987)**, book by James Lapine.

- "Children Will Listen"
- "Ever After"

**Assassins (1990)**, book by John Weidman.

- "Something Just Broke"
- "The Gun Song"

**Passion (1994)**, book by James Lapine.

- "Fosca's Entrance (I Read)"
- "Is This What You Call Love?"
- "Loving You"
- "Happiness"

**Road Show (2008)**, Book by John Weidman, formally titled Bounce (2003).

- "The Best Thing That Ever Has Happened"

# Sondheim on Sondheim

## Cast

Benton.....	Benton Evans
AnnaBelle.....	AnnaBelle Lowe
Tommy.....	Tommy Malek
Josh.....	Josh Mooney
Ellen.....	Ellen Quay
Matt.....	Matt Wetzel
Robyn.....	Robyn Bloom Yakaitis
Kristen.....	Kristen Zwobot

## Understudies

*Understudies never substitute for players unless a specific announcement for the appearance is made at the time of the performance.*

Ryan Kieft: For Tommy Malek, Matt Wetzel

Madee Kline: For AnnaBelle Lowe, Ellen Quay

Melanie Kurstin: For Robyn Bloom Yakaitis, Kristen Zwobot

Vincent Kirk Musgrave: For Benton Evans, Josh Mooney



## Production Team

Director/ Choreographer .....	STEPHEN FOREMAN
Music Director .....	RACHEL SANDLER
Pit Conductor .....	PAIGE RAMMELKAMP
Assistant Director .....	DEBBIE MOBLEY
Assistant Choreographer .....	MADDIE BOHRER
Stage Manager .....	REBECCA HANAUER
Assistant Stage Manager .....	TYLER HART
Backstage Crew .....	NICK THOMPSON
Costume Designer .....	DEANA CRUZ-CONNER
Assistant Costumer /Dresser .....	MICA WEISS
Makeup Design .....	DEANA CRUZ-CONNER
Hair & Wig Design .....	TOMMY MALEK
Properties Designer .....	JESSIE KRUPKIN
Lighting Designer .....	TJ LUKACSINA
Light Board Operator .....	BERT ROBERTS
Sound Designer .....	ETHAN HOGARTY
Video Creator and Designer .....	PETER FLAHERTY
Projection Coordinator/ Additional Projections .....	STUART KAZANOW
Projection Operator .....	SIMON SINNREICH
Scenic Designer/ Lead Painter .....	STEPHEN FOREMAN
Head Carpenters .....	STEPHEN FOREMAN, NEAL TOWNSEND
Set Construction .....	TYLER HART, REBECCA HANAUER, CHRIS MOBLEY, YOUSUF SHAF, NEAL TOWNSEND, CHRIS TURNER
Set Painting .....	TYLER HART, REBECCA HANAUER, LINDSAY KATZ, DEBBIE MOBLEY, ANGIE TOWNSEND
Production Photographer .....	ANA JOHNS
Producer/ Program Design .....	ANDE KOLP

## Silhouette Stages Board of Directors

President.....	Jeremy Goldman
Artistic Director.....	TJ Lukacsina
Vice President.....	Ande Kolp
Treasurer.....	Rebecca Hanauer
Secretary.....	Julie Press
Technical Director.....	Alex Porter
Volunteer Coordinator.....	Neal Townsend
Cabaret Producer.....	Angie Townsend
Front of House Manager.....	Stephen Foreman
Marketing/Publicity.....	MarQuis Fair
Box Office Manager.....	Maddie Bohrer



# Cast and Select Production Team Bios

presented in alphabetical order



**Robyn Bloom Yakaitis (Robyn)** (she/her) Robyn is excited to back on stage since her last performance pre-COVID. You may have seen her in some of her previous roles at Silhouette Stages such as Reno in *Anything Goes*, Nancy in *Oliver*, and Violet in *9 to 5*. Other favorite roles include Madame Thernadier in *Les Miserable* (HCST), Ms. Hannigan in *Annie* (HCST), and Martha in *Secret Garden* (Cockpit). To the cast - She is so honored to be part of this group of performers. She is humbled at every rehearsal. Thank you to Stephen for this opportunity to come back to the stage with this extremely talented cast. Love to her family - understanding every time she said "I'm sorry I have rehearsal." Kelly - You are the definition of strength. Greg - Ditto.



**Maddie Bohrer (Assistant Choreographer)** (she/her) Maddie Bohrer is so happy to be a part of this amazing production! Maddie was last seen on the Silhouette Stages stage earlier this year as Julia Sullivan in *The Wedding Singer*. Other local performances include *RENT* (Heritage Players), Lorelei Lee in *Gentlemen Prefer Blondes* (Heritage Players), Bonnie in *Anything Goes* (Silhouette Stages), Annabel Glick in *Lucky Stiff* (Silhouette Stages), and Associate Choreographer and Ensemble for *Cry Baby* (Silhouette Stages). Maddie earned a degree in Theatre and Dance from Frostburg State University. She has performed for over twenty years. Maddie also serves on the Silhouette Stages board of directors as the Box Office Manager. She would like to thank Stephen for the opportunity to work with him and this extremely talented cast and production team. Special thanks to her fiance' Corey for being the best kitten dad while she pursues her passion. Enjoy the show!



**Deana Cruz- Conner (Costume Designer)** (she/her) is thrilled to be part of this wonderful production at Silhouette Stages. She began performing onstage in ArtsCentric's productions of *The Color Purple*, *Dreamgirls*, *Sister Act*, and *La Cage Aux Folles*. In the last few years, Deana has been blessed to expand her talents to Costume Design. Her work has been seen in productions of *We are Proud* and *RENT* at ArtsCentric in Baltimore, in *Zanna Don't* and [title of show] at Spotlighters Theatre, *The Mountaintop* at Greenbelt Arts Center, also *She Loves Me*, *Cinderella*, *Percy Jackson and the Lightning Thief*, and most recently *The Wedding Singer* at Silhouette Stages. Deana is delighted to be a member of this great production team and thanks her family and friends for their unwavering love and support.



**Benton Evans (Benton)** (he/him) Benton is excited to make his Silhouette Stages debut and be back on the community theater stage after three years. Moving from Virginia, he was last seen in the Musical Review - Ain't Misbehavin' (Ken) at the Lynchburg Academy Center for the Arts. Benton would like to thank his loving wife for her support and the production team at Silhouette for this great opportunity to share his love for the arts with the community.



**Stephen Foreman (Director/ Choreographer/ Set Designer)** (he/him) is thrilled to be back at Silhouette Stages directing, having previously directed *She Loves Me* and *Cabaret* (2019 W.A.T.C.H Award for Outstanding Direction). He has served as the Website and Front of House Manager on Silhouette Stages Board of Directors since 2021 and has been performing/ directing in the Baltimore area since 2016. Recent works include Director/ Scenic Designer for Spotlighters Theater's productions of [title of show] & *Zanna Don't: A Musical Fairy Tale* and for the East Coast Premiere of *Quadrille: A Romantic Play* at Greenbelt Arts Center. Special thanks to Rachel, Becca, Debbie, Maddie & Tyler for being a collaborative support system throughout this entire process, to my Mother for inspiring my passion for theatrical arts, and most humbly to the amazingly talented group of performers, musicians, designers and countless volunteers for joining him on this journey and sharing their talents to do justice to the brilliantly complicated works of Stephen Sondheim.



**Rebecca Hanauer (Stage Manager)** (she/her) Rebecca Hanauer is thrilled to be back at Silhouette Stages after stage managing "*Lightning Thief*" and working on *Addams Family* and *Forum* as the ASM, and set designing for "*Calendar Girls*". She was recently seen on stage as Hope Harcourt here at Silhouette Stages' production of "*Anything Goes*". Other previous credits include *Ladybug* in "*James and the Giant Peach*" (Heritage Players) Ensemble in "*Lucky Stiff*" (Silhouette Stages), *Diana* in "*Next to Normal*" and *Rizzo* in "*Grease*" (Missouri S&T, Rolla, MO). For multiple shows, she has done a variety of jobs behind the scenes, including hair/wig/makeup design, set building, wardrobe, and set designing. When she's outside the theatre, she works as an electrical engineer here in Columbia. Many thanks to this phenomenal cast and production team for this journey. All my love to my family, friends, and especially to Chris.



**Tyler Hart (Assistant Stage Manager)** (he/him) is happy to be here. This is his fourth show with Silhouette Stages and he is grateful to the whole team for welcoming him with such open arms. Credits: Cinderella (ASM), The Lightning Thief (ASM), and The Wedding Singer (SM). Special Thanks to the cast, crew, and pit for an incredible experience.



**Ethan Hogarty (Sound Designer)** (he/him) Ethan has been running sound for theater since 1990. It all started at Burn Brae Dinner Theater and from there he moved on to Shadow Block Productions and finally Silhouette Stages. Some of his favorite shows to run sound for are Big Fish, West Side Story, and Avenue Q. Ethan would like to thank Alex Porter for being a mentor to him all these years, and Mo for giving him his start at Shadow Block.



**Stuart C. Kazanow (Projection Coordinator/Additional Projections)** (he/him) is excited to once again be working with Silhouette Stages, after having previously designed animations for their production of Spamalot and performed in their productions of Chicago and Company. Stuart has also been known to perform, design sound, create fake book jackets, and fill other sundry roles for productions around the Baltimore area. Stuart thanks Stephen for bringing him aboard as part of this stellar production team and cast. Gods of the theatre, smile on us. Stuart also thanks his wife, Donna, for her never-ending love and support, for which he is always grateful and never sorry.



**Ryan Kieft (understudy for Tommy Malek and Matt Wetzel)** (he/him) Ryan is excited to be making his debut with Silhouette Stages. Past shows include The Addams Family (Lucas), Urinetown (McQueen), and Junior Claus (Junior) at Other Voices Theatre; Pippin with Fredericktowne Players. Ryan is an elementary school music teacher in Montgomery County Public Schools. Frequently an instrumentalist in the pit, he has covered the brass books from Assassins all the way to Xanadu. He would like to thank his family, friends, and cast for their love and support.



**Madee Kline (understudy for AnnaBelle Lowe and Ellen Quay)** (she/her) is thrilled to make her debut with Silhouette Stages. Madee is a full-time teaching artist, working with ages 5-21. She encourages the exploration of Shakespearean text, musical theatre and stage combat. In addition to her teaching artistry, Madee is an experienced intimacy choreographer, she is dedicated to being an advocate for consent and safety onstage and beyond. Madee graduated from the University of Maryland, College Park, where she obtained a BA in Theatre with a focus in Performance. In both 2018 and 2020 she was selected as an Irene Ryan nominee at the KCACTF Region II. Her favorite roles include, The Comedy of Errors (Dromio of Ephesus), Puffs (Susie Bones/Blondo Malfoy/Bippy/Hermione #2), Mr. Burns, a Post-Electric Play (Bart Simpson) and Oklahoma! (Laurey Williams). In the fall Madee will attend Emerson College in Boston, where she will earn a Masters degree in Theatre Education and Applied Theatre.



**Jessie Krupkin (Properties Master)** (she/her) Jessie is thrilled to be a part of this production of Sondheim on Sondheim under the direction of Stephen Forman. She is truly blown away by the talent of the cast, and honored to have been able to work with the tremendously talented production team and crew. Previous prop/set dressing work with SS include The Wedding Singer, The Lightning Thief, Cinderella and Calendar Girls.



**Melanie Kurstin (Understudy for Robyn Bloom Yakaitis and Kristen Zwobot)** (she/her) is making her Silhouette Stages debut! Melanie was most recently seen in Iron Crow Theatre's production of Hurricane Diane (Pam) and The National Edgar Allan Poe Theatre's inaugural production of Edgar Allan Poe's Blood, Sweat and Fears (Esme Perrin). Other favorite/notable credits include NYC: American Idiot (Whatsername), Hedwig and the Angry Inch (Yitzhak); REGIONAL: Head Over Heels (Mopsa), Firebringer (Emberly), The Revolutionists (Charlotte Corday), Bloody Bloody Andrew Jackson (The Storyteller), PUFFS (Megan Jones), The Rocky Horror Show (Magenta), The Wild Party (Kate), 25th Annual Putnam County Spelling Bee (Logainne), and Harry Connick Jr's The Happy Elf Starring Michael Rupert (The Angry Lady). She has also performed as part of the choir honoring Billy Joel at the 2014 Kennedy Center Honors, and has worked on the Latin Grammy Awards, Grammy Awards, and Sundance Film Festival. Sincere thanks and love to those closest to her for their never-ending support, patience and encouragement. Instagram: @MelanieQuinn13



**AnnaBelle Lowe (AnnaBelle)** (she/they) is absolutely thrilled to be making her debut with Silhouette Stage! Recent roles include Cathy (*The Last Five Years*, GAC), Sibella (*A Gentleman's Guide To Love and Murder*, RCP), Helena (*A Midsummer Night's Dream*, HBP), and Florika (*The Hunchback of Notre Dame*, TAP). Her Sondheim roles include Johanna (*Sweeney Todd*, TAP), Marta and April (*Company*, TCP and PTP), Squeaky and Housewife (*Assassins*, PTP and LMP), Rapunzel (*Into the Woods*, PTP), and Vibrata (*A Funny Thing...Forum*, PTP). Stephen Sondheim has brought so many wonderful people and precious memories into AnnaBelle's life, she will be eternally grateful. In 2015, AnnaBelle earned a WATCH Award for Outstanding Lead Actress in a Musical (*Marian Paroo, The Music Man*, PTP).



**TJ Lukaccina (Artistic Director)** (he/him) is honored to be working with such a talented and dedicated cast and production team. He is the current Artistic Director for Silhouette Stages and recently won the 2019 WATCH Award for Outstanding Light Design for a Musical (*Cabaret*).  
**LIGHTING:** *The Color Purple*, *The Mountaintop*, *The Lightning Thief*, *The Drowning Girls*, *Jekyll & Hyde: An Immersive Experience*, *Striking 12*, *Always Patsy Cline*, *Murder Ballad*, *Cabaret*, *'Night*, *Mother*, *Into the Woods*, and *Sweeney Todd*.  
**DIRECTING:** *The Lightning Thief*, *Cinderella*, *Hairspray*, *Big Fish*, *Legally Blonde*, *Into the Woods*, *Thoroughly Modern Millie*, *Sweeney Todd*, *White Christmas*. Many thanks to his friends and family who have continuously inspired me to do and be better.



**Tommy Malek (Tommy)** (they/he) is thrilled to be returning to the wonderful Silhouette Stages where they proudly served as the organization's first Artistic Director from 2017-2019 and have taken part in many projects as actor, director, designer, and board member over the last 14 years! Recent local performances include *Man 3* in *Putting It Together* with The Colonial Players, *Mr. Wormwood* in *Matilda* with Charm City Players, *The Baker* in *Into the Woods* with Theatre at CBT, *Gordon Schwinn* in *A New Brain* with CCBC Catonsville, *Emcee* in *Cabaret* with Silhouette Stages (2020 WATCH Award Winner - Outstanding Lead Actor in a Musical), and *William BarfÃ©e* in *Spelling Bee* with Artistic Synergy of Baltimore. Tommy would like to thank this wildly talented production team and cast for sharing their gifts and for all the laughs and tears along the way. "Here's to us! Who's like us? Damn few." Enjoy the show!



**Debbie Mobley (Assistant Director)** (she/her) Debbie was last seen at Silhouette as Grandma Rose in *The Wedding Singer*. She's thrilled to assist direct this cast full of talent Debbie is co-directing Silhouette's next production of *The SpongeBob Musical* coming to the stage this Fall. Join us!



**Josh Mooney (Josh)** (he/him) is thrilled to be making his debut with Silhouette Stages. He was most recently seen at Colonial Players of Annapolis as Man 1 (no relation) in *Putting It Together* (yay, all the Sondheim!). Josh can be seen next in Maryland Theatre Collective's upcoming production of *Ragtime* as Father this Fall. Favorite credits include Carl Hanratty (*Catch Me If You Can*), Bela Zangler (*Crazy For You*), Franz Liebkind (*The Producers*), Harry Bright (*Mama Mia*) "Sweaty" Eddie (*Sister Act*), Sir Lancelot & Various Others (*Spamalot*), Gomez Addams (*The Addams Family*) & Jack Kirby (*King Kirby*). Special thank you to Stephen, the production team and crew; the indescribably talented cast; Mom, family, friends and all audience in attendance; and, of course, Rachel (my love!). As always, for Dad.



**Vincent Musgrave (understudy for Benton Evans and Josh Mooney)** (he/him) Vince is back for a second time with Silhouette! You may have seen him here as Gomez in the kooky and spooky *Addams Family*. He is very excited, well, excited and scared to be a cover for this amazing production. His last onstage foray was in the cast of *Something Rotten* at Toby's Dinner Theater (ensemble/US Nostradamus/Brother Jeremiah) His local directorial credits include *Crazy for You* (ASGT), *Children of Eden* (2nd Star) and *Putting It Together* (Colonial Players). Choreo credits include *A Chorus Line*, *Shrek*, *Addams Family*, *The Full Monty*, *Catch Me If You Can*, *Side Show* and many more. He thanks this team and amazing cast. He thanks his husband Peter for his constant love and support. Enjoy.



**Ellen Quay (Ellen)** (she/her) Ellen is thrilled to perform in her first show at Silhouette Stages with this delightful cast and crew! This past January, Ellen played Chick Boyle in *Crimes of the Heart* with the Colonial Players and for her 2022 performance as Trix the Aviatrix in *The Drowsy Chaperone* with Annapolis Summer Garden Theater, Ellen won a WATCH Award for Outstanding Cameo in a Musical! When she's not having a blast on stage, Ellen can be found voice acting and narrating audiobooks in her home studio for publishers including Penguin Random House, Brilliance Audio, Dreamscape Media, and more. Ellen would like to dedicate her performance to her loving husband Nathanael and their 3 amazing children!





**Paige Rammelkamp (Piano/Conductor)** (she/her) is a proud graduate of American University, with a dual degree in Musical Theatre and Vocal Performance. She is a class accompanist at American University and Howard University, and an audition accompanist at Signature Theatre and Olney Theatre Center. Notable music direction projects include: Urinetown, The Mystery of Edwin Drood (Workhouse Arts Center), Ichabod (Creative Cauldron), The Bridges of Madison County (Red Branch Theatre Co.), Bonnie & Clyde (Monumental Theatre Co.), Bright Star, The Fantasticks (Little Theatre of Alexandria), Bright Star, Sister Act, RENT (Annapolis Summer Garden Theatre), Together at Last, Beauty and the Beast, Sweeney Todd, Man of La Mancha (The Arlington Players). She is also currently music directing First Date with Annapolis Summer Garden Theatre, opening June 29th!



**Rachel Sandler (Music Director)** (she/her) is a local music director, voice teacher, and, as of 2023, the Executive Director of the Maryland Theatre Collective. She is thrilled for the opportunity to work on such brilliant music with equally as brilliant colleagues. Some favorite credits include Freaky Friday (MTC), RENT (The Heritage Players), The Addams Family (Silhouette Stages), Spelling Bee (Artistic Synergy) and 9 to 5 (ASGT). Special thanks to the brilliant Paige Austin Rammelkamp for bringing this music to life with such professionalism and artistry. For more info about voice lessons and upcoming projects, visit [www.rachelsandlermusic.com](http://www.rachelsandlermusic.com)



**Mica Weiss (Assistant Costume Designer)** (they/them) Mica feels so blessed to have been able to work with this wonderful cast and production team. This has been their first show working with costumes, and it has been an amazing experience learning from Deana and Stephen. Thank you for supporting local theatre!



**Matt Wetzel (Matt)** (he/they) is ecstatic to be back on stage once again here at Silhouette Stages! You may have seen him in their previous productions of Spamalot (The Character Actor), Young Frankenstein (Igor), and Legally Blonde (Emmett Forrest). Other favorite roles of Matt's include Seymour Krelborne in Little Shop of Horrors at Purple Light, Guildenstern in Rosencrantz and Guildenstern are Dead at Fells Point Corner Theatre, and Jamie in The Last 5 Years at Greenbelt Arts Center. Matt would like to thank the entire cast and production staff for giving him the chance to honor one his favorite musical theatre composers of all time. A toast to that invincible bunch!



**Kristen Zwobot (Kristen)** (she/her) Kristen is thrilled to be back onstage with Silhouette Stages after last being seen in back-to-back productions as Rita in Lucky Stiff and in the ensemble of Legally Blonde. She just finished playing Mother in the regional premier of Nevermore with Stillpointe Theatre. Other favorite roles include: Nadia in bare (Conejo Productions), Narrator in Joseph...Dreamcoat (Chesapeake Music Hall), Cecile in the original musical Shovel in the Dirt (Stillpointe), the Witch in Into The Woods (RTP), prog metal version of Sweeney Todd (Landless: ensemble Helen Hayes nomination) and a featured soloist in Kennedy Center's Broadway: A New Generation (w/Marc Shaiman and Scott Wittman). Thanks to the fabulous cast and production team who share her love, obsession, with all things Sondheim. Many thanks to her co-star in life, Brett, and her greatest production so far, son Brooks, for their love and support.

GAC - Greenbelt Arts Center, RCP - Reston Community Players  
HBP - Hard Bargain Players, TAP - The Arlington Players, PTP - Port Tobacco Players.  
TCP - Tantallon Community Players, LMP - Laurel Mill Playhouse

**RACHEL  
SANDLER**  
*music*

## **Voice Lessons & Audition Prep** for *Musical Theatre*

Locations

Hanover | Columbia | Ellicott City

***Online Lessons Are Available!***

*Inquire about flexible  
summer packages today!*

[rachelsandlermusic.com](http://rachelsandlermusic.com)





## Director's Note

A legend in the arts, Stephen Sondheim changed musical theatre forever. His ability to encapsulate humanity through complex music and finely crafted lyrics is unsurpassed. He composed songs that have garnered worldwide acclaim and recognition for being some of the most challenging and fulfilling pieces to perform. He mentored countless up and coming composers and ushered in the current voices of American musical theatre. But how can one encapsulate Stephen Sondheim, the man? A composer, a lyricist, a teacher, a legend, but also something of a mystery. Sondheim was the theater's most revered and influential composer-lyricist of the last half of the 20th century, if not its most popular, but he largely remained out of the public's eye. The show you are about to experience will give you a joyful glimpse into the boy that became Sondheim; his heartaches, his process and his uncanny sense of humor.

Since Stephen Sondheim's passing in November 2021, many companies have been clamoring to mount productions of works as a tribute to his immeasurable contribution to the world of musical theater. Silhouette Stages and I decided that we couldn't merely pick one Sondheim show but rather to present tonight's musical journey narrated by the impresario himself. Sondheim on Sondheim was originally conceived and Directed by Sondheim's long time collaborator, James Lapine, and opened on Broadway in 2010 at 54 Below. The show went on to garner Sondheim his 8th and final Tony Award.

Tonight you will enjoy many of the songs that became his standards, as well as dive deeper into some rarely heard numbers that were cut even before the opening curtain. With our beautiful orchestra and some of the most talented performers to ever grace our stage; we will all spend the evening with the man who brought us a painter's perspective, a witch's soul, and a murderous barber's revenge. We hope this funny, affectionate and revealing tribute touches your heart and inspires you to re-examine the unparalleled world of the Shakespeare of Musical Theatre, Stephen Joshua Sondheim.

Director  
Stephen Foreman



At JH Momentum, we love capturing moments. We love to see the story behind the scenes and bring it in front of the lens.

We don't want to be cookie cutter videographers or photographers; we want to be whimsical and innovative. We want to see emotion and your true self. We want to capture your essence, your passion, your heart, your story.

That's really what JH Momentum is - whether you're a high school principal, a small business owner, an stage or film actor, or a bride planning a wedding - we're here to tell your story.

-Justin & Heather Moe



**We are here to serve:  
COUPLES - CORPORATE - CREATIVES**

**for all your video and photo needs!**



us@jhmomentum.com



JH Momentum LLC



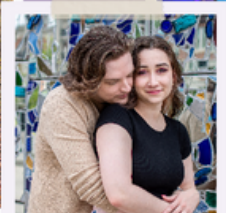
@jhmomentum

Headshots  
& Production Stills  
by

*Stasia Stuart Photography*

Also available for  
Weddings  
Family Portraits  
Special Events

[StasiaSteuartPhotography.com](http://StasiaSteuartPhotography.com)



**Thank you Ana (Stasia Steuart  
Photography) for the amazing  
photos of our production!**

**~ The Sondheim on Sondheim  
Production Team**

**Silhouette Stages  
Season 19  
2023-2024**

*Season Tickets On Sale In July!*



**Silhouette Stages is a proud member of the Washington Area Theatre Community Honors since 2018**

